

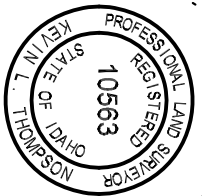
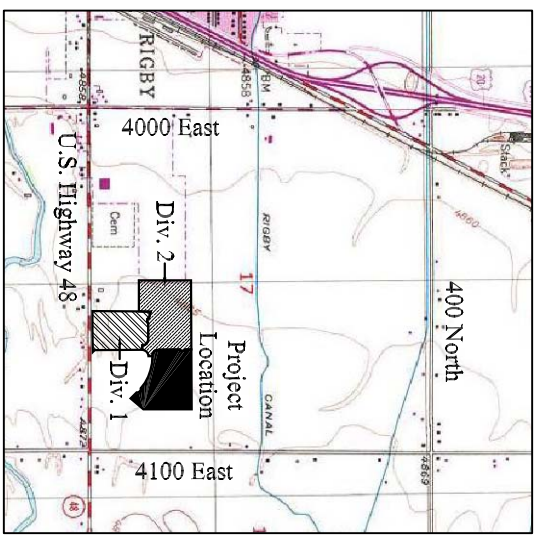
HAILEY CREEK

AN ADDITION TO THE CITY OF RIGBY
JEFFERSON COUNTY, IDAHO

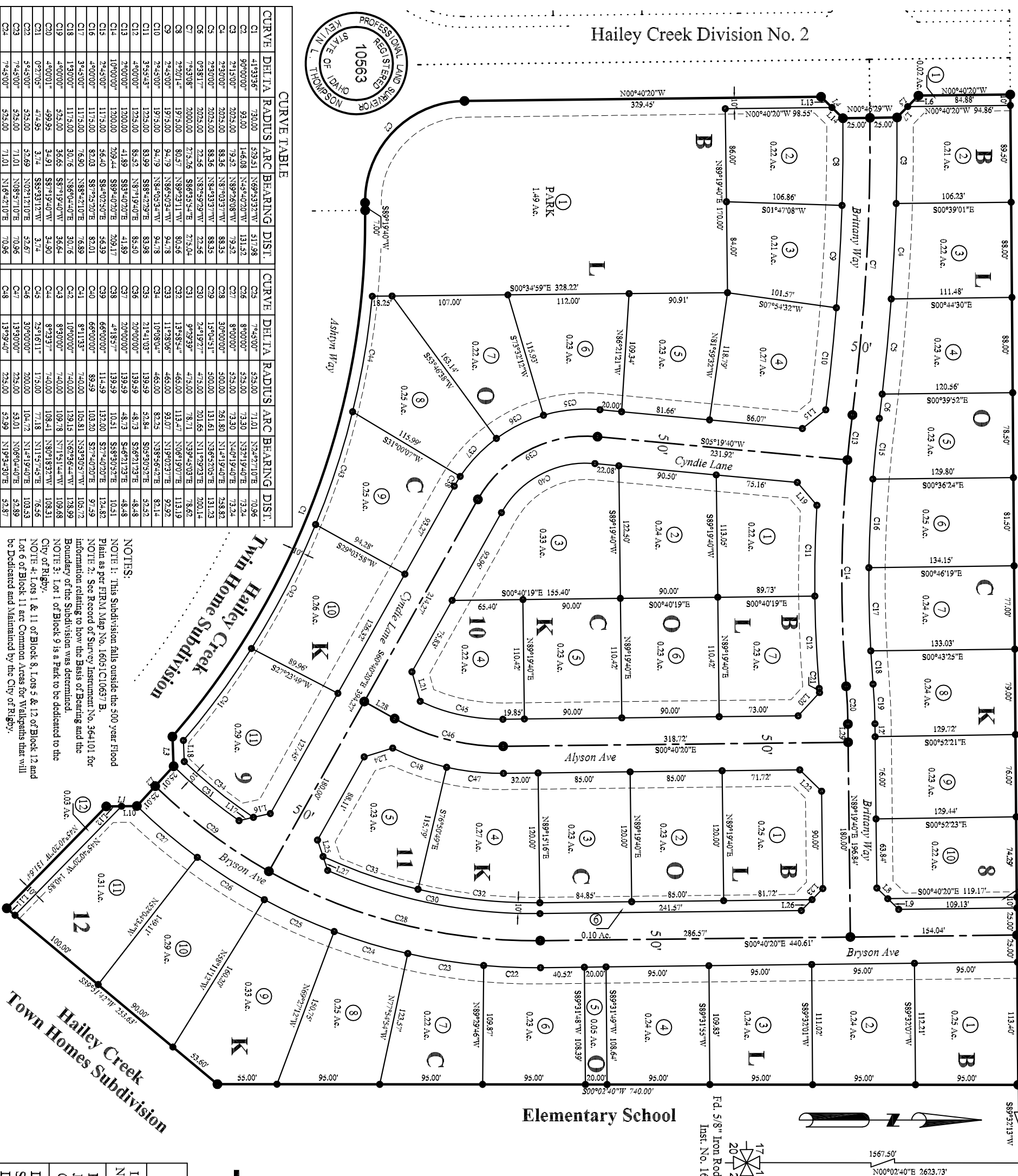
DIVISION NO. 3
LOCATED IN THE SE 1/4 OF SECTION 17, T4N R39E, B.M.

F.d. Pk Nail
Inst. No. 255543

F.d. 5/8" Iron Rod w/ Al Cap
Inst. No. 166877

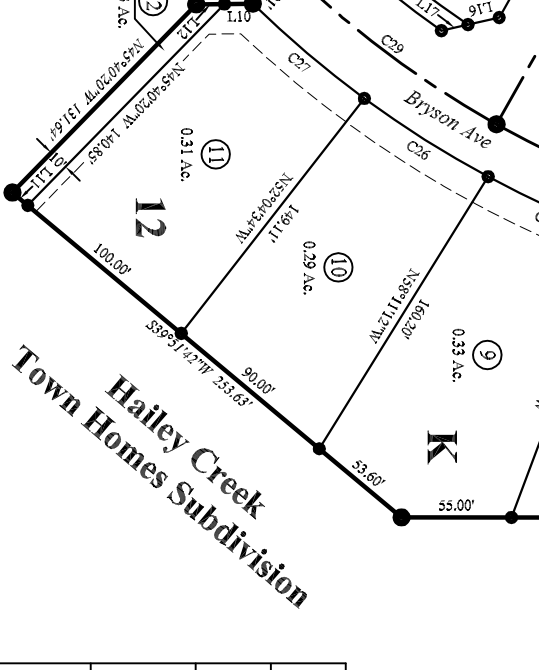


Hailey Creek Division No. 2



CURVE	DELTA	RADIUS	ARC BEARING	DIST.	CURVE	DELTA	RADIUS	ARC BEARING	DIST.
C1	41°33'36"	730.00	S79°51'N69°53'27"W	517.98	C25	7°45'00"	525.00	N32°42'10"E	70.96
C2	90°00'00"	93.00	N45°40'20"W	131.32	C26	8°00'00"	525.00	N32°19'40"E	73.24
C3	2°15'00"	2025.00	N89°26'08"W	79.52	C27	8°00'00"	525.00	N32°19'40"E	73.24
C4	2°30'00"	2025.00	N89°03'37"W	88.35	C28	3°00'00"	500.00	N14°19'40"E	234.82
C5	2°30'00"	2025.00	N88°43'37"W	88.35	C29	1°30'00"	500.00	N14°19'40"E	131.23
C6	0°38'17"	2025.00	N89°29'29"W	22.56	C30	2°49'27"	475.00	N11°29'23"E	200.14
C7	7°53'08"	2000.00	N89°55'54"E	215.04	C31	9°29'29"	475.00	N11°29'23"E	200.14
C8	2°20'14"	1975.00	N89°23'11"W	80.56	C32	1°35'54"	465.00	N13°47'N06°19'07"E	113.19
C9	2°45'00"	1975.00	N88°50'34"W	94.78	C33	1°12'06"	465.00	N13°47'N06°19'07"E	92.92
C10	2°45'00"	1975.00	N88°40'53"W	94.78	C34	1°08'06"	465.00	N13°47'N06°19'07"E	82.14
C11	3°55'43"	1225.00	S88°27'29"E	83.98	C35	2°14'10"	139.59	S24°30'27"E	52.52
C12	4°00'00"	1225.00	S89°19'40"E	83.50	C36	2°00'00"	139.59	S24°30'27"E	48.48
C13	4°00'00"	1200.00	S89°40'20"E	41.89	C37	2°00'00"	139.59	S24°30'27"E	48.48
C14	10°00'00"	1200.00	S89°40'20"E	209.17	C38	4°18'57"	139.59	S24°30'27"E	10.51
C15	2°45'00"	1175.00	S89°26'08"W	56.39	C39	4°18'57"	139.59	S24°30'27"E	10.51
C16	4°00'00"	1175.00	S89°26'08"W	82.01	C40	6°00'00"	89.49	S27°40'20"E	97.59
C17	3°45'00"	1175.00	N88°42'10"E	78.89	C41	8°11'33"	74.00	N33°30'27"W	103.72
C18	1°30'00"	1175.00	N86°04'40"E	30.76	C42	10°00'00"	74.00	N33°30'27"W	103.72
C19	4°00'00"	525.00	S89°19'40"W	34.90	C43	8°30'00"	109.78	N67°36'44"W	128.99
C20	4°00'00"	499.55	S89°19'40"W	3.90	C44	8°23'37"	74.00	N80°18'22"W	108.31
C21	0°27'09"	474.95	S88°31'22"W	3.74	C45	2°51'11"	175.00	N11°57'45"E	76.56
C22	5°45'00"	525.00	N08°21'10"E	52.67	C46	3°00'00"	200.00	N04°12'N06°19'07"E	108.53
C23	7°45'00"	525.00	N08°57'10"E	70.96	C47	1°30'00"	225.00	N06°04'40"E	52.89
C24	7°45'00"	525.00	N16°42'10"E	70.96	C48	1°30'00"	225.00	N19°34'30"E	52.87

NOTES:
NOTE 1: This Subdivision falls outside the 500 year Flood Plain as per FEMA Map No. 16051C10657 B.
NOTE 2: See Record of Survey Instrument No. 364101 for information relating to how the Basis of Bearing and the Boundary of the Subdivision was determined.
NOTE 3: Lot 1 of Block 9 is a Park to be dedicated to the City of Rigby.
NOTE 4: Lots 1 & 11 of Block 8, Lots 5 & 12 of Block 12 and Lot 6 of Block 11 are Common Areas for Walkways that will be Dedicated and Maintained by the City of Rigby.



LEGEND
 ● Set 5/8" X 30" Iron Rod w/ Plastic Cap No. 10563
 ○ Set 1/2" X 30" Iron Rod w/ Plastic Cap No. 10563
 - - - - - Adjacent Property Line
 - - - - - 15" Public Utility Easement (P.U.E.)

AGREEMENT
 Total Subdivision: 14.86 Acres
 41 Buildable Lots: 10.01 Acres
 6 Common Area Lots: 1.72 Acres
 Dedicated Public Road: 3.13 Acres
 Linear Footage of Road: 2806.14 Feet

LINE TABLE

LINE	BEARING	LENGTH	LINE	BEARING	LENGTH
L1	N00°40'20"W	28.28	L16	S12°50'03"E	16.04
L2	N44°17'18"W	50.02	L17	S12°50'03"E	13.61
L3	S87°41'34"W	27.38	L18	N87°41'34"E	19.45
L4	N44°23'11"E	28.31	L19	N49°17'32"E	27.77
L5	N44°36'59"W	28.26	L20	S47°26'48"E	29.15
L6	N44°36'59"W	14.16	L21	S71°58'25"W	29.35
L7	N44°36'59"W	14.10	L22	N44°19'40"E	28.28
L8	S44°19'40"W	14.14	L23	S45°40'20"E	14.14
L9	S44°19'40"W	14.14	L24	N17°10'30"W	27.53
L10	N00°40'20"W	14.14	L25	S71°29'23"W	16.04
L11	S39°51'42"W	10.03	L26	S45°40'20"E	14.14
L12	N00°40'20"W	14.14	L27	S71°29'23"W	13.61
L13	N44°23'11"E	14.13	L28	N29°19'40"E	32.15
L14	N44°23'11"E	14.19	L29	S89°19'40"W	16.84
L15	S38°41'45"E	27.80			

GRAPHIC SCALE
 0 60 120 180 240 Feet

TE THOMPSON ENGINEERING, INC.
 CONSULTING ENGINEERS
 RIGBY, IDAHO 83442

FINAL PLAT

Project Name: Jaramie Magera
 Job Number: 2007-50
 CoGo File: 4-39-17.pro

Date: September 4, 2008
 Surveyor: K.L.T.
 Drawn By: T.S.G.

Scale: 1" = 60'
 Sheet 2 Of 2