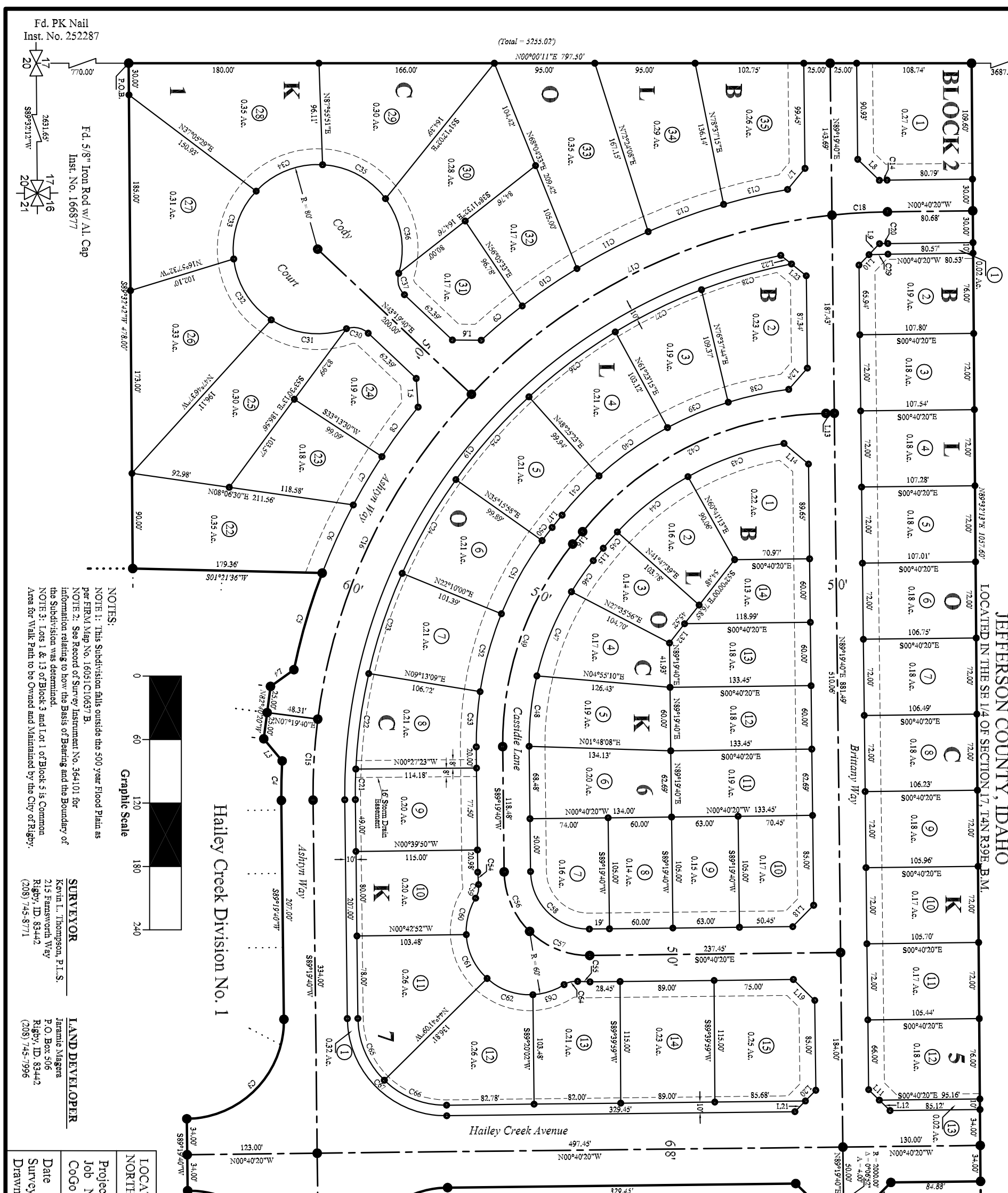


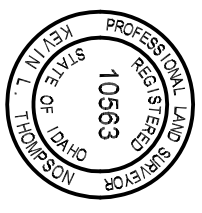
Fd. 5/8" Iron Rod w/ Al. Cap  
Inst. No. 291933

# HAILEY CREEK

DIVISION NO. 2  
AN ADDITION TO THE CITY OF RIGBY  
JEFFERSON COUNTY, IDAHO  
LOCATED IN THE SE 1/4 OF SECTION 17, T4N R39E B1M.



LINE	BEARING	LENGTH
L1	S45°36'59"E	28.26
L2	S44°23'11"W	28.31
L3	S50°10'38"W	27.20
L4	N35°51'18"W	27.20
L5	N86°10'38"E	27.20
L6	S00°28'42"W	27.20
L7	S40°21'02"E	25.88
L8	S43°58'03"W	28.46
L9	N46°06'16"W	14.40
L10	N46°06'16"W	13.67
L11	S44°19'40"W	14.14
L12	S44°19'40"W	14.14
L13	N00°40'20"W	7.92
L14	N46°08'48"E	30.27
L15	N51°10'20"W	15.00
L16	N51°10'20"W	15.00
L17	S51°10'20"E	15.00
L18	S45°40'20"E	28.28
L19	N44°19'40"E	28.28
L20	S45°40'20"E	14.14
L21	S45°40'20"E	14.14
L22	N38°42'11"E	13.02
L23	N38°42'11"E	17.90
L24	S48°45'27"E	26.72



**TE** THOMPSON ENGINEERING, INC.  
CONSULTING ENGINEERS  
RIGBY, IDAHO 83442

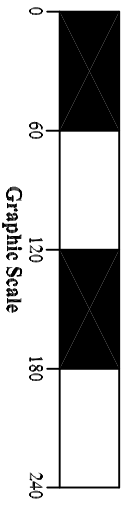
**ACREAGE**  
Total Subdivision ..... 17.98 Acres  
54 Buildable Lots ..... 11.53 Acres  
3 Common Area Lots ..... 0.56 Acres  
Dedicated Public Road ..... 6.09 Acres  
Linear Footage of Road ..... 4466.3 Feet

**FINAL PLAT**

LOCATED IN THE SE 1/4 OF SECTION 17, TOWNSHIP 4 NORTH, RANGE 39 EAST, JEFFERSON COUNTY, IDAHO

Project Name:	Jaramie Magera	Date:	September 4, 2008
Job Number:	2007-50	Surveyor:	K.L.T.
CoGo File:	4-39-17.pro	Drawn By:	T.S.G.
Scale:	1" = 60'	Sheet:	2
		Of:	2

**NOTES:**  
NOTE 1: This Subdivision falls outside the 500 year Flood Plain as per FIRMA Map No. 16051C10637B.  
NOTE 2: See Record of Survey Instrument No. 364101 for information relating to how the Basis of Bearing and the Boundary of the Subdivision was determined.  
NOTE 3: Lots 1 & 13 of Block 3 and Lot 1 of Block 5 is Common Area for Walk Path to be Owned and Maintained by the City of Rigby.



Fd. PK Nail  
Inst. No. 252287

Fd. 5/8" Iron Rod w/ Al. Cap  
Inst. No. 166877