

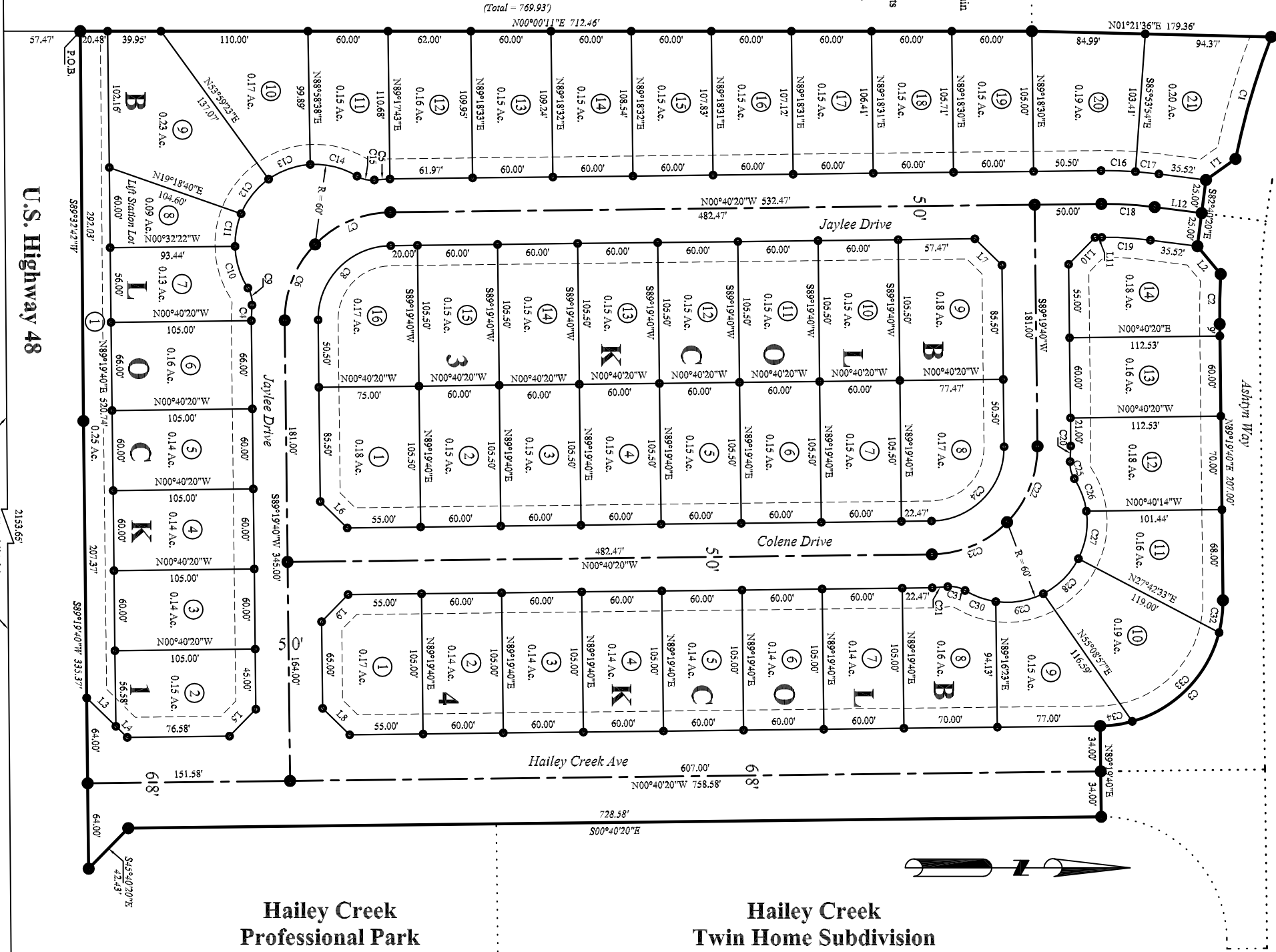
UNDEVELOPED

NOTES:
 NOTE 1: This Subdivision falls outside the 500 year Flood Plain as per FIRIM Map No. 16051C10637 B.
 NOTE 2: See Record of Survey Instrument No. 364101 for information relating to how the Basis of Bearing and the Boundary of the Subdivision was determined.
 NOTE 3: Lot 2 of Block 1 to Access Jaylee Drive only and Lots 1 thru 14 of Block 3 to Access Colene Drive only.
 NOTE 4: Lot 1 of Block 1 is a Common Area to be Dedicated, Owned and Maintained by the City of Rigby.
 NOTE 5: Lot 8 of Block 1 is to be Dedicated to the City of Rigby for a Lift Station Lot.

ACREAGE
 Total Subdivision 11.43 Acres
 49 Buildable Lots 7.70 Acres
 2 Common Area Lots34 Acres
 Dedicated Public Road 3.39 Acres
 Linear Footage of Road 2626.36 Feet

Robert L. Thayer
 Personal Representatives Deed
 Inst. No. 301012

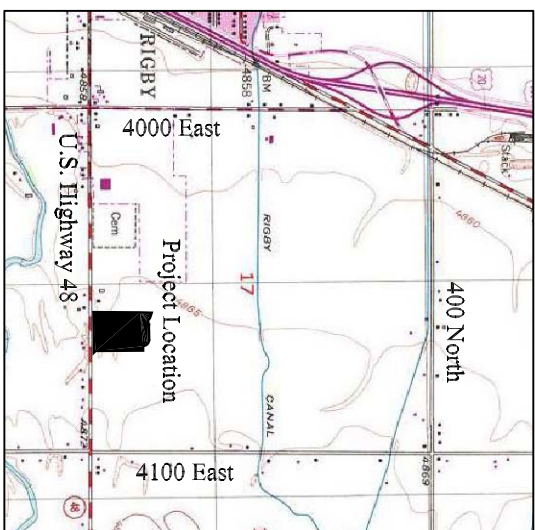
LINE	BEARING	LENGTH
L1	S35°31'18"E	27.20
L2	N50°10'38"E	27.20
L3	S44°19'40"W	30.53
L4	S44°19'40"W	11.90
L5	S45°40'20"E	28.28
L6	S44°19'40"W	28.28
L7	N44°19'40"E	28.28
L8	S44°19'40"W	28.28
L9	N45°40'20"W	28.28
L10	N45°40'20"W	28.28
L11	S00°40'20"E	5.00
L12	N07°19'40"E	35.52



Hailey Creek Professional Park

Hailey Creek Twin Home Subdivision

CURVE	DELTA	RADIUS	ARC BEARING	DIST.	
C1	9°25'00"	580.00	95.34	S73°39'42"E	95.24
C2	3°41'56"	580.00	37.44	S88°49'22"E	37.44
C3	9°00'00"	93.00	14.608	S45°40'20"E	131.52
C4	6°22'31"	105.00	11.68	S87°29'05"E	11.68
C5	6°22'31"	105.00	11.68	S03°51'35"E	11.68
C6	4°50'00"	80.00	62.83	S68°10'20"E	61.23
C7	4°50'00"	80.00	62.83	S23°10'20"E	61.23
C8	3°37'29"	20.00	32.89	N7°24'41"E	33.57
C9	3°37'29"	20.00	32.89	S7°24'41"E	33.57
C10	31°50'00"	60.00	25.13	S79°25'20"E	24.95
C11	23°49'58"	60.00	25.13	S1°25'21"E	33.08
C12	32°00'00"	60.00	33.51	S1°25'21"E	33.08
C13	35°00'00"	60.00	36.65	S14°49'39"E	36.08
C14	35°00'00"	60.00	36.65	S19°25'21"E	33.08
C15	4°34'00"	311.48	25.82	S01°42'10"W	25.82
C16	4°34'00"	311.48	17.67	S02°42'10"W	17.67
C17	8°10'00"	286.48	40.00	S05°19'40"W	39.97
C18	8°10'00"	286.48	40.00	S05°19'40"W	39.97
C19	6°22'31"	105.00	11.68	N87°29'05"W	11.68
C20	6°22'31"	105.00	11.68	N87°29'05"W	11.68
C21	6°22'31"	105.00	11.68	N03°51'35"W	11.68
C22	4°50'00"	80.00	62.83	N68°10'20"W	61.23
C23	4°50'00"	80.00	62.83	N23°10'20"W	61.23
C24	9°00'00"	53.00	86.39	N44°40'20"W	77.78
C25	3°37'29"	20.00	13.48	N67°23'26"E	13.23
C26	2°50'00"	60.00	26.18	S68°24'41"W	25.97
C27	3°50'00"	60.00	36.65	N80°25'19"W	36.08
C28	3°59'58"	60.00	37.70	N44°55'20"W	37.08
C29	3°50'00"	60.00	36.65	N09°25'21"W	36.08
C30	2°30'00"	60.00	24.61	N19°44'39"E	24.44
C31	3°37'29"	20.00	13.48	S12°15'54"W	13.23
C32	1°50'00"	93.00	24.35	N83°10'20"W	24.28
C33	6°00'00"	93.00	97.39	N45°40'20"W	93.00
C34	1°50'00"	93.00	24.35	N08°10'20"W	24.28



HAILEY CREEK

DIVISION NO. 1
 AN ADDITION TO THE CITY OF RIGBY
 JEFFERSON COUNTY, IDAHO
 LOCATED IN THE SE 1/4 OF SECTION 17, T4N R39E, B.M.

TE THOMPSON ENGINEERING, INC.
 CONSULTING ENGINEERS
 RIGBY, IDAHO 83442

FINAL PLAT

LOCATED IN THE SE 1/4 OF SECTION 17, TOWNSHIP 4 NORTH, RANGE 39 EAST, JEFFERSON COUNTY, IDAHO

Project Name: Jaramie Magera
 Job Number: 2007-50
 CoGo File: 4-39-17.pro
 Date: September 4, 2008
 Surveyor: K.L.T.
 Drawn By: T.S.G.

Scale: 1" = 60'
 Sheet: 2 Of 2

Fd. PK Nail
 Inst. No. 252287

Fd. 5/8" Iron Rod w/ Al. Cap
 Inst. No. 166877

F.A.P. No. W.P.M.S. 160-C

U.S. Highway 48